

# Technical Data Sheet

CODE 12011

## ARIETT LL I T

Centrifugal duct fans for flush mounting



### Certifications



IMQ



CE



IMQ Performance



EAC



UKCA

### TECHNICAL AND PERFORMANCE DATA

Frequency (Hz)	50	Voltage (V)	230
Insulation class	II°	Weight (Kg)	1,9
IP	X4	Max airflow (l/s)	uscita: posteriore 22,2 laterale 19,4
Max absorbed current (A)	0,13	Max airflow (m³/h)	80
Max absorbed power (W)	19	Max pressure (mmH2O)	11
Max absorbed power at Max speed (W)	19	Max pressure (Pa)	108
Max ambient temperature for continuous operation (°C)	40	Max pressure at Max speed (mmH2O)	11
Nominal diameter (mm)	100	RPM	2360
Ø Discharge hole (mm)	96,5	RPM side air outlet - max speed	2460

### DIMENSIONS

Size A (mm)	252
Size B (mm)	23
Size C (mm)	65
Size D (mm)	214,5
Size E (mm)	228
Size F (mm)	135,3
Size G (mm)	31,5/76,7
Size H (mm)	Ø 96,5
Size I (mm)	180
Size L (mm)	92
Size M (mm)	76

### PER INFORMAZIONI / FOR INFORMATION

#### ITALY

Pre Sales:  
[prevendita@vortice-italy.com](mailto:prevendita@vortice-italy.com)  
After Sales:  
[postvendita@vortice-italy.com](mailto:postvendita@vortice-italy.com)

#### UNITED KINGDOM & REP. OF

IRELAND  
Sales Dept:  
[sales@vortice.ltd.uk](mailto:sales@vortice.ltd.uk)  
Technical Dept:  
[technical@vortice.ltd.uk](mailto:technical@vortice.ltd.uk)

#### OTHER COUNTRIES

Sales Dept:  
[export@vortice-italy.com](mailto:export@vortice-italy.com)  
After Sales:  
[after-sales@vortice-italy.com](mailto:after-sales@vortice-italy.com)

# Technical Data Sheet

CODE 12011

## ARIETT LL I T

Centrifugal duct fans for flush mounting

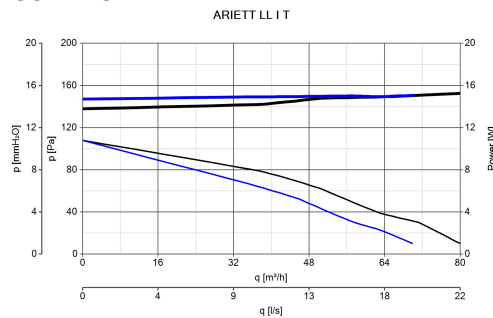


### DESCRIPTION

- Material: UV resistant plastic (prevents ageing caused by exposure to sunlight).
- Nominal diameter: 100 mm
- Motor with thermal overload protection and shaft turning in ball bearings.
- Maximum air flow, rear: 80 m<sup>3</sup>/h
- Maximum air flow, side: 70 m<sup>3</sup>/h
- Vertical outlet port supplied as standard with spigot positionable

- horizontally by means of diverter.
- Rear outlet port equipped with non-return damper.
- Equipped with electronic timer designed to shut off the motor automatically after a set interval, selectable during installation in the range 3'-20' (default setting 3').
- IMQ SAFETY and IMQ PERFORMANCE certifications
- Vortice speed controller.

### CURVES

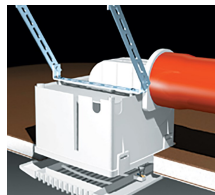


### ACCESSORIES



#### **KIT CONTROSOFFITTATOREZZONTALE**

Code 22823



#### **RACCORDO ALTO**

Code 22841



PER INFORMAZIONI /  
FOR INFORMATION

#### **DEVIATORE DI FLUSSO M 10/4**

Code 22310

ITALY

Pre Sales:

[prevendita@vortice-italy.com](mailto:prevendita@vortice-italy.com)

After Sales:

[postvendita@vortice-italy.com](mailto:postvendita@vortice-italy.com)

UNITED KINGDOM & REP. OF

IRELAND

Sales Dept:

[sales@vortice.ltd.uk](mailto:sales@vortice.ltd.uk)

Technical Dept:

[technical@vortice.ltd.uk](mailto:technical@vortice.ltd.uk)

OTHER COUNTRIES

Sales Dept:

[export@vortice-italy.com](mailto:export@vortice-italy.com)

After Sales:

[after-sales@vortice-italy.com](mailto:after-sales@vortice-italy.com)