

Constructive configuration models from 400 to 800



Constructive configuration models from 900 to 1250

Axial flow cabinet fans, for general ventilation. Casing manufactured from heavy gauge galvanised sheet steel, internally lined with 25 mm thickness fireproof fibreglass acoustic insulation (M0). Variable pitch angle impeller, dynamically balanced to ISO 14694: G6.3, made from high grade aluminium. Hubs made from aluminium or pressed sheet steel, depending on diameter and mechanical requirements. Standard air operation temperature range: -20°C to +40°C.

Check EasyVent to select the most suitable configurations for the installation, and obtain the corresponding datasheets.

Motors

Single speed in 2 and 4 poles. IE3 efficiency category from 0,75kW onwards, IE2 minimum for lower kW motors. Not applicable to 8 pole or two speed motors. All motors are IP55, Class F insulation. Electrical supplies: Three phase 220-240/380-415-50/60Hz up to 3 kW. Three phase 380-415V-50Hz, for higher power motors and two speed motors. Suitable for inverter control. 60Hz versions available in EasyVent.

Other data

Standard air direction Motor-Impeller (Form A). For horizontal airflow installation.

On request

Two speed in 2/4, 4/8, 4/6 or 6/12 poles. Motors provided with PTC thermistor or space heaters.

ATEX CGT

ATEX versions available for three phase models. For ambient working temperatures from -20°C to +40°C. ATEX Flameproof-Gas

In standard ATEX version flameproof motors are without thermal protection. If used with frequency inverter, flameproof motors with a PTC-type thermal protection must be specified at order.

- ⊕ II 2G Ex d IIB T4
- ⊕ II 2G Ex d IIB+H2 T4 (with Ex d IIC T4 motor)
- ATEX Increased safety- Gas
- ⊕ II 2G Ex e II T3

ATEX- Dust

In standard ATEX version, ATEX motors for dust are without thermal protection. If used with frequency inverter, ATEX motors for dust with a PTC-type thermal protection must be specified at order.

Suspended flammable particles and non-conductive dust: ⊕ II 3D Ex tc IIIB T125°C

Conductive dust: ⊕ II 3D Ex tc IIIC T125°C (with IP65 motor)

To select CGT ATEX refer to performance curves for CHGT or Easyvent.

Note electrical data may vary for ATEX motors.

Specific applications

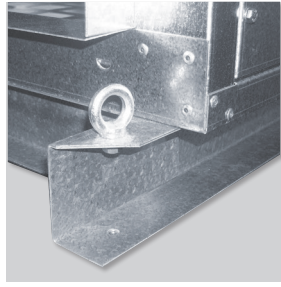


Versions



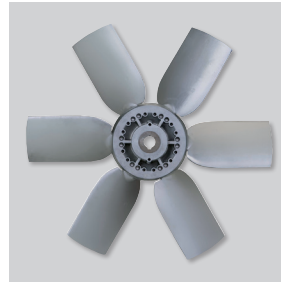
Corrosion resistance

Casings manufactured from galvanised sheet steel. Design enables the casing side panels to be removed and the motor/impeller assembly accessed.



Easy to install

Robust base supports facilitate the installation. (Models from 900 to 1250).



Impeller dynamically balanced

Impeller dynamically balanced, according to ISO 14694: G6.3, providing vibration free operation.



Wide blade design: higher pressure

Wide blade design to ensure the highest efficient airflow performances.

Configuration 1: models from 400 to 800-6.

Configuration 2: models from 800-9 to 1250.

REFERENCE

C	G	T	/	4	-	1	0	0	0	-	6	/	16	/	A	7,5 kW
1				2		3				4		5		6		7

- 1 - : Product range.
- 2 - : Number of poles.
- 3 - : Diameters.
- 4 - : Number of blades.
- 5 - : Blade pitch angle.
- 6 - : Airflow direction.
- 7 - : Motor Power.

TECHNICAL CHARACTERISTICS - 2 poles - 2950 rpm

Before installation check that the product electrical characteristics listed on the data plate label (voltage, power, frequency, etc.) match those of the intended electrical supply.

We reserve the right to use different motor suppliers, therefore the following data may differ.

Model	Diameter (mm)	Motor power	Full load current at 400V (A)	Weight (kg)
CGT/2-400-6/-1,1	400	1,1	2,32	54
CGT/2-400-6/-1,5	400	1,5	3,07	57
CGT/2-400-6/-2,2	400	2,2	4,43	62

Model	Diameter (mm)	Motor power	Full load current at 400V (A)	Weight (kg)
CGT/2-450-6/-1,5	450	1,5	3,07	61
CGT/2-450-6/-2,2	450	2,2	4,43	66
CGT/2-450-6/-3	450	3	5,77	73

TECHNICAL CHARACTERISTICS - 4 poles - 1450 rpm

Model	Diameter (mm)	Motor power	Full load current at 400V (A)	Weight (kg)
CGT/4-400-6/-0,25	400	0,25	0,74	47
CGT/4-450-6/-0,25	450	0,25	0,74	51
CGT/4-450-6/-0,37	450	0,37	1,13	53
CGT/4-450-6/-0,55	450	0,55	1,38	56
CGT/4-500-6/-0,55	500	0,55	1,38	58
CGT/4-500-6/-0,75	500	0,75	1,62	60
CGT/4-500-6/-1,1	500	1,1	2,3	65
CGT/4-560-6/-0,55	560	0,55	1,38	57
CGT/4-560-6/-0,75	560	0,75	1,62	59
CGT/4-560-6/-1,1	560	1,1	2,3	64
CGT/4-560-6/-1,5	560	1,5	3,15	67
CGT/4-560-6/-2,2	560	2,2	4,56	74
CGT/4-630-6/-0,75	630	0,75	1,62	64
CGT/4-630-6/-1,1	630	1,1	2,3	69
CGT/4-630-6/-1,5	630	1,5	3,15	72
CGT/4-630-6/-2,2	630	2,2	4,56	79
CGT/4-630-6/-3	630	3	6,15	85
CGT/4-710-3/-0,75	710	0,75	1,62	74
CGT/4-710-3/-1,1	710	1,1	2,3	79
CGT/4-710-3/-1,5	710	1,5	3,15	82
CGT/4-710-3/-2,2	710	2,2	4,56	89
CGT/4-710-3/-3	710	3	6,15	95
CGT/4-710-6/-1,1	710	1,1	2,3	82
CGT/4-710-6/-1,5	710	1,5	3,15	85
CGT/4-710-6/-2,2	710	2,2	4,56	92
CGT/4-710-6/-3	710	3	6,15	98
CGT/4-710-6/-4	710	4	8,2	99

Model	Diameter (mm)	Motor power	Full load current at 400V (A)	Weight (kg)
CGT/4-800-3/-1,1	800	1,1	2,3	84
CGT/4-800-3/-1,5	800	1,5	3,15	87
CGT/4-800-3/-2,2	800	2,2	4,56	94
CGT/4-800-3/-3	800	3	6,15	100
CGT/4-800-3/-4	800	4	8,2	101
CGT/4-800-3/-5,5	800	5,5	10,3	130
CGT/4-800-6/-1,5	800	1,5	3,15	91
CGT/4-800-6/-2,2	800	2,2	4,56	98
CGT/4-800-6/-3	800	3	6,15	104
CGT/4-800-6/-4	800	4	8,2	105
CGT/4-800-6/-5,5	800	5,5	10,3	134
CGT/4-800-6/-7,5	800	7,5	13,9	141
CGT/4-800-9/-4	800	4	8,2	108
CGT/4-800-9/-5,5	800	5,5	10,3	137
CGT/4-800-9/-7,5	800	7,5	13,9	144
CGT/4-900-3/-2,2	900	2,2	4,56	158
CGT/4-900-3/-3	900	3	6,15	164
CGT/4-900-3/-4	900	4	8,2	165
CGT/4-900-3/-5,5	900	5,5	10,3	194
CGT/4-900-3/-7,5	900	7,5	13,9	201
CGT/4-900-6/-4	900	4	8,2	169
CGT/4-900-6/-5,5	900	5,5	10,3	198
CGT/4-900-6/-7,5	900	7,5	13,9	205
CGT/4-900-6/-11	900	11	20,7	258
CGT/4-900-6/-15	900	15	28,4	280
CGT/4-900-9/-5,5	900	5,5	10,3	202
CGT/4-900-9/-7,5	900	7,5	13,9	209
CGT/4-900-9/-11	900	11	20,7	262
CGT/4-900-9/-15	900	15	28,4	284

TECHNICAL CHARACTERISTICS - 4 poles - 1450 rpm (CONTINUATION)

Model	Diameter (mm)	Motor power	Full load current at 400V (A)	Weight (kg)
CGT/4-1000-3/-3	1000	3	6,15	161
CGT/4-1000-3/-4	1000	4	8,2	162
CGT/4-1000-3/-5,5	1000	5,5	10,3	191
CGT/4-1000-3/-7,5	1000	7,5	13,9	198
CGT/4-1000-3/-11	1000	11	20,7	251

CGT/4-1000-6/-4	1000	4	8,2	167
CGT/4-1000-6/-5,5	1000	5,5	10,3	196
CGT/4-1000-6/-7,5	1000	7,5	13,9	203
CGT/4-1000-6/-11	1000	11	20,7	256
CGT/4-1000-6/-15	1000	15	28,4	278
CGT/4-1000-6/-18,5	1000	18,5	34,9	310
CGT/4-1000-6/-22	1000	22	40,9	331

CGT/4-1000-9/-5,5	1000	5,5	10,3	201
CGT/4-1000-9/-7,5	1000	7,5	13,9	208
CGT/4-1000-9/-11	1000	11	20,7	261
CGT/4-1000-9/-15	1000	15	28,4	283
CGT/4-1000-9/-18,5	1000	18,5	34,9	315
CGT/4-1000-9/-22	1000	22	40,9	336

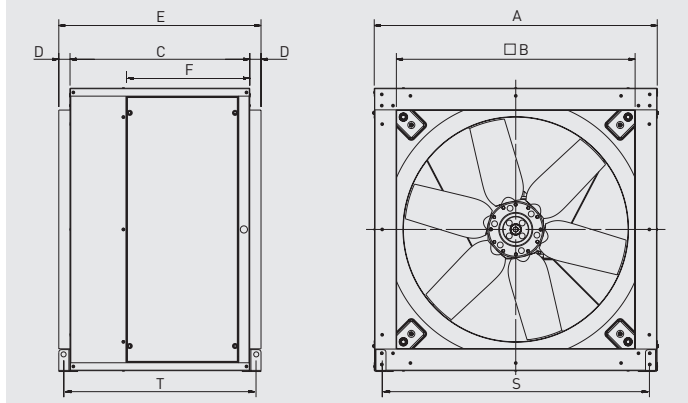
Model	Diameter (mm)	Motor power	Full load current at 400V (A)	Weight (kg)
CGT/4-1250-3/-7,5	1250	7,5	13,9	355
CGT/4-1250-3/-11	1250	11	20,7	408
CGT/4-1250-3/-15	1250	15	28,4	430
CGT/4-1250-3/-18,5	1250	18,5	34,9	462
CGT/4-1250-3/-22	1250	22	40,9	483
CGT/4-1250-3/-30	1250	30	54,6	531

CGT/4-1250-6/-15	1250	15	28,4	435
CGT/4-1250-6/-18,5	1250	18,5	34,9	467
CGT/4-1250-6/-22	1250	22	40,9	488
CGT/4-1250-6/-30	1250	30	54,6	536
CGT/4-1250-6/-37	1250	37	65,6	682
CGT/4-1250-6/-45	1250	45	79,4	710

CGT/4-1250-9/-15	1250	15	28,4	440
CGT/4-1250-9/-18,5	1250	18,5	34,9	472
CGT/4-1250-9/-22	1250	22	40,9	493
CGT/4-1250-9/-30	1250	30	54,6	541
CGT/4-1250-9/-37	1250	37	65,6	687
CGT/4-1250-9/-45	1250	45	79,4	715

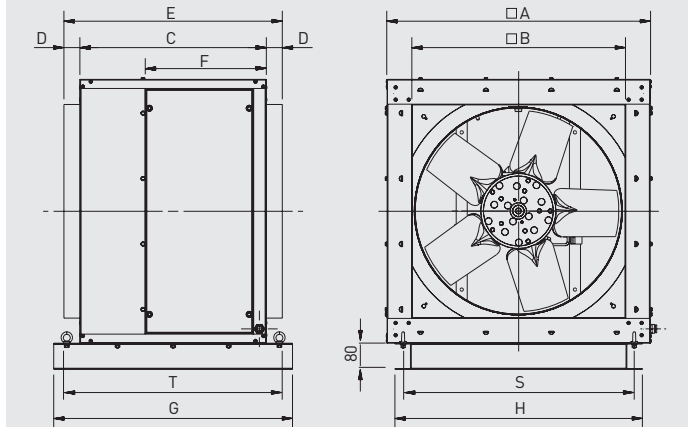
DIMENSIONS (mm)

Models 400 to 800



Model	□A	□B	C	D	E	F
400	509	423	440	40	520	304
450	567,6	473	483	40	563	317
500	638	523	525	40	605	331
560	718,6	583	570	40	650	370
630	808	653	570	40	650	370
710	907,6	750	640	40	720	438
800	1007,6	850	640	40	720	438

Models 900 to 1250

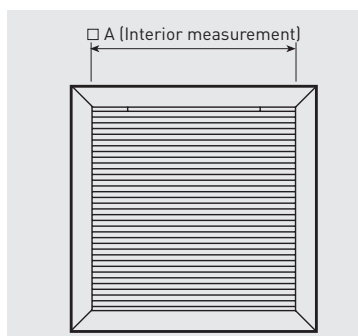


Model	□A	□B	C	D	E	F	G	H
900	1126,5	950	700	50	800	503	860	1076,5
1000	1256,5	1055	700	50	800	503	860	1206,5
1250	1476,5	1275	900	50	1000	310	1060	1426,5

MOUNTING ACCESSORIES

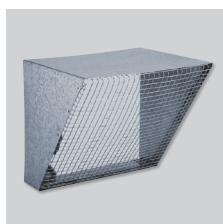


PER-CR CHGT/CGT
Back draught damper with steel frame and resistant light-weight aluminium blades, with a device which allows a perfect and coordinated opening of the blades. RAL 7012 color. These louvres include protective guard. Dampers to be used together with CHGT and CGT fans to avoid air returns in parallel installations.

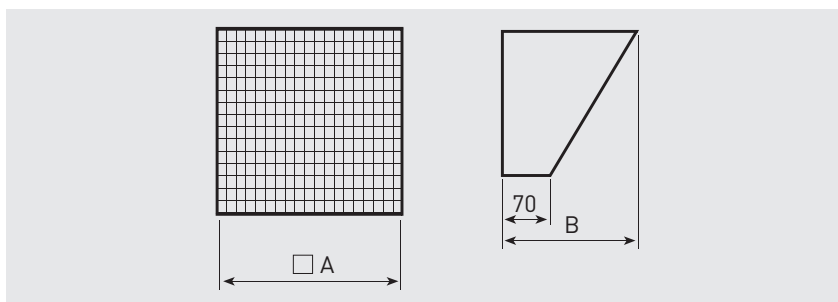


Dimensions in mm.

Model	A
PER-CR CHGT/CGT-400	428
PER-CR CHGT/CGT-450	478
PER-CR CHGT/CGT-500	528
PER-CR CHGT/CGT-560	585
PER-CR CHGT/CGT-630	655
PER-CR CHGT/CGT-710	752
PER-CR CHGT/CGT-800	852
PER-CR CHGT/CGT-900	952
PER-CR CHGT/CGT-1000	1057
PER-CR CHGT/CGT-1250	1277

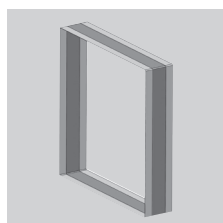


CVD CGT/CHGT
Protection guards
Wire protection guards for mounting on the inlet or discharge sides of the cabinets.

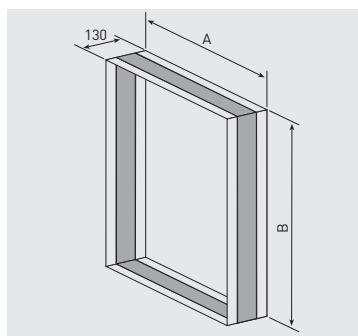


Model cabinet	Inlet and discharge		
	Protection guard model	□ A	B
CGT-400	CVD CHGT/CGT-400	424	313,5
CGT-450	CVD CHGT/CGT-450	474	341,5
CGT-500	CVD CHGT/CGT-500	524	369,5
CGT-560	CVD CHGT/CGT-560	584	403,5
CGT-630	CVD CHGT/CGT-630	654	422,5
CGT-710	CVD CHGT/CGT-710	751	503,8
CGT-800	CVD CHGT/CGT-800	851,5	560,2
CGT-900	CVD CHGT/CGT-900	951,5	616,2
CGT-1000	CVD CHGT/CGT-1000	1056,5	675
CGT-1250	CVD CHGT/CGT-1250	1276,5	798,3

Dimensions in mm.



ACOP RECT CHGT/CGT F400
Rectangular flexible connector.



Dimensions in mm.

Model cabinet	A	B
ACOP RECT CHGT/CGT 400 F400	424	424
ACOP RECT CHGT/CGT 450 F400	474	474
ACOP RECT CHGT/CGT 500 F400	524	524
ACOP RECT CHGT/CGT 560 F400	584	584
ACOP RECT CHGT/CGT 630 F400	654	654
ACOP RECT CHGT/CGT 710 F400	751	751
ACOP RECT CHGT/CGT 800 F400	851	851
ACOP RECT CHGT/CGT 900 F400	951	951
ACOP RECT CHGT/CGT 1000 F400	1056	1056
ACOP RECT CHGT/CGT 1250 F400	1276	1276