

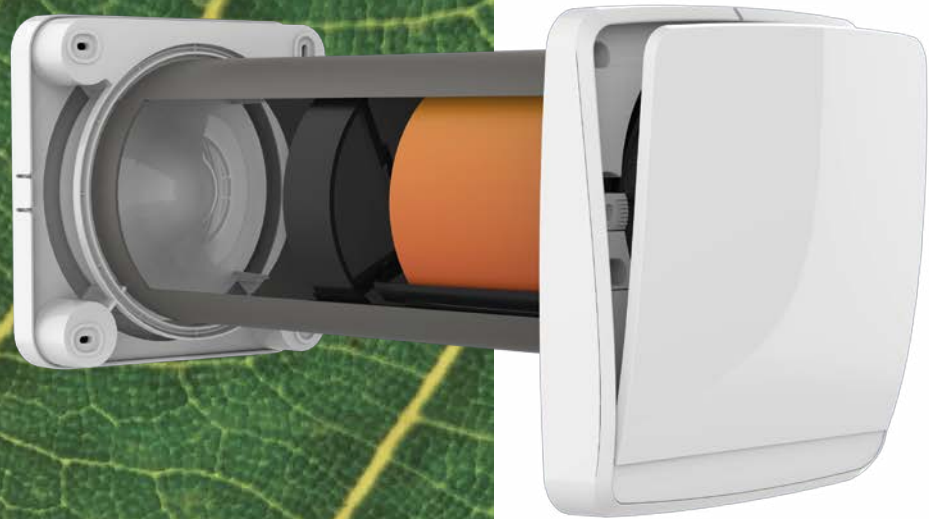
GREENLINE

G.O.ERRE

GHOST

VMC DECENTRALIZED

HEAT RECOVERY UNIT
WITH ALTERNATING
FLOWS



INSTALLATION

EASY

CONSUMPTION FROM

3,9 W

MAX RECOVERY EFFICIENCY

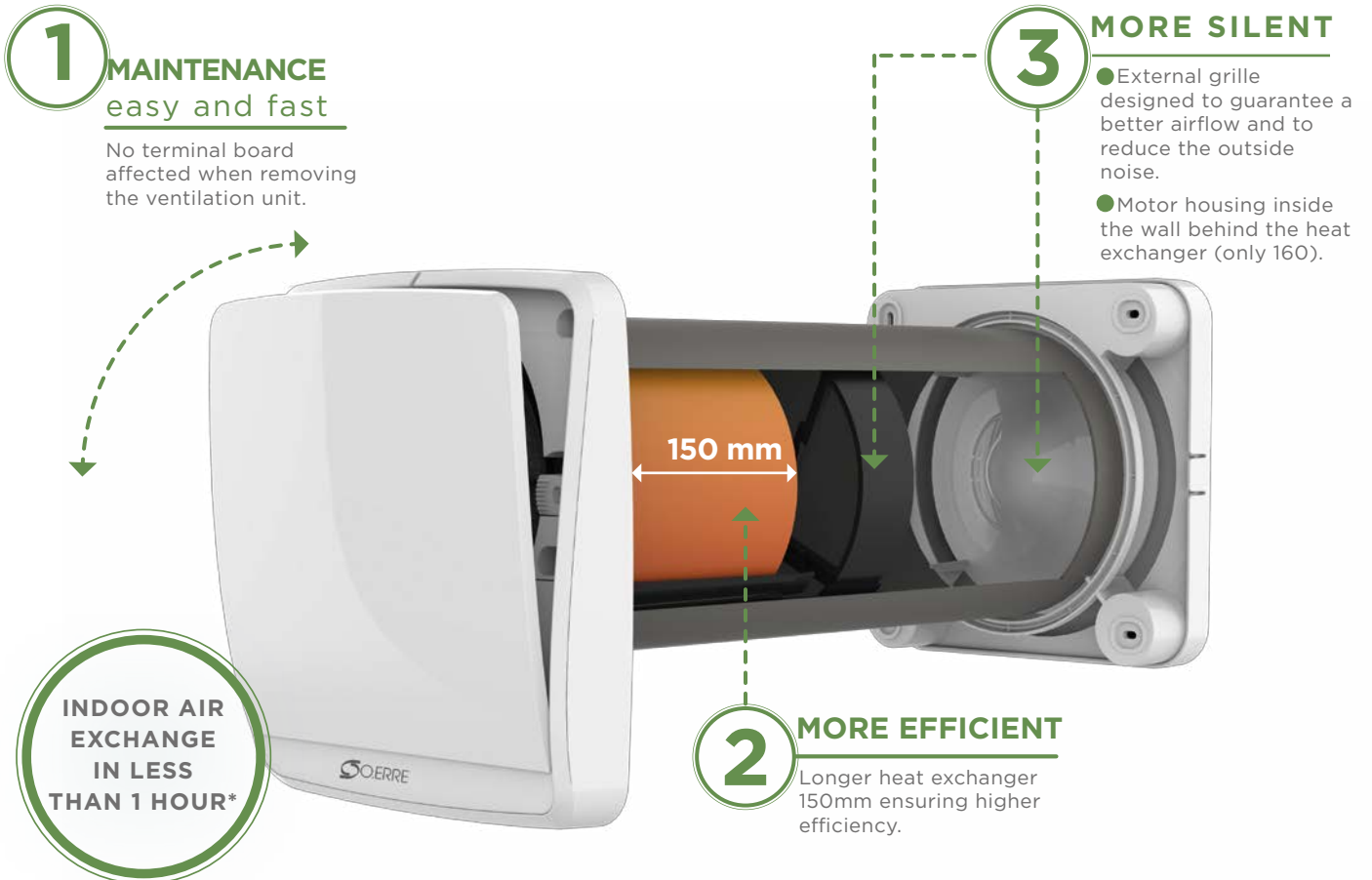
93%

NOISE FROM

4 dB(A)

DECENTRALIZED HEAT RECOVERY UNIT ALTERNATE FLOW

GHOST is the perfect solution to grant a proper mechanical ventilation in homes and business premises, in case of renovations and in all situations where a ducted system cannot be used due to space reasons. Ghost is easy to install and has a modern and sleek design. This means that the fan can blend seamlessly into any environment. It can be quickly installed on 100mm or 160mm diameter ducting. The airflow covers 60 m³/h both for air extraction and intake, thus ensuring an adequate ventilation also in high-sized rooms. The alternate flow system ensures an indoor constant air quality.



*estimated time for room size of about 20sqm

3 VERSIONS

BASE

Possible to control by remote (wall switch not supplied):

- ON/OFF
- 1 and 2 speed

ACTIVE

Wire connection between the units:

- display remote control (accessory sold separately)
- integrated humidity and twilight sensors which allow several automatic functioning modes (see remote control)
- up to 16 units communicating in sequence in the same system in master/slave mode, through easy dip switches configuration
- 3 adjustable speeds (plus night version)

WIRELESS

Wireless connection between the units:

- display remote control (accessory sold separately)
- integrated humidity and twilight sensors which allow several automatic functioning modes (see remote control)
- up to 16 units communicating in sequence in the same system in master/slave mode, through easy dip switches configuration
- 3 adjustable speeds (plus night version)

DISPLAY REMOTE CONTROL

SURVEILLANCE MODE



The product remains in sleep mode keeping the sensors active. In case the humidity level detected in the environment is higher than the preset one, the product will automatically start running until reset values.

AIRFLOW SPEED

3 Speed levels: 60 m³/h
40 m³/h
20 m³/h

HUMIDITY CONTROL

90%
60%
40%

AUTO MODE

Automatic operation with heat recovery through humidity and twilight sensors.

AUTO

AUTO



MANUAL

MANUAL

MANUAL MODE

Running mode with heat recovery at the manually set speed (the sensors excluded)

NIGHT FUNCTION

It allows to minimise the flow rate and the noise during the night.



BOOST FUNCTION

It allows the air extraction at the maximum speed for a certain time.



FLOW FUNCTION

It allows to select the direction of the air flow.

FILTER RESET

After 3000 hours operations the unit requires ordinary maintenance (filter cleaning). Through the same button, after completing the maintenance, the normal operation can be restored.



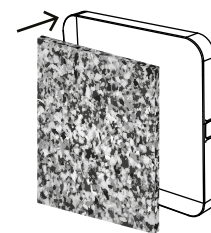
OPTIONAL

Filter kit ISO COARSE 45% (only 160)



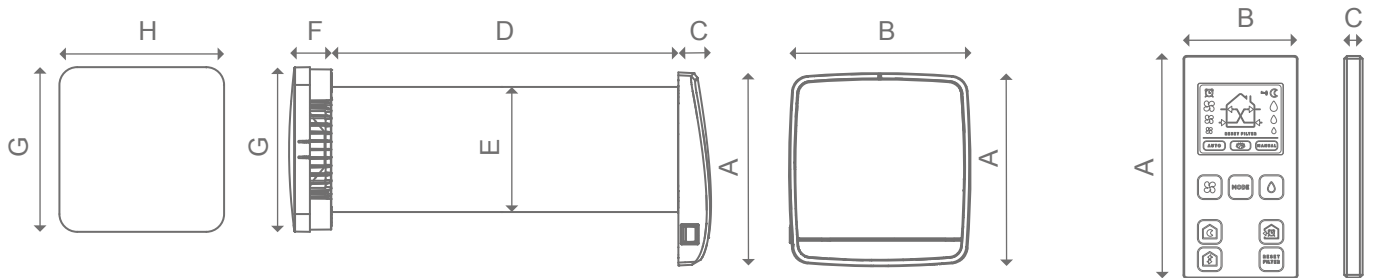
ISO COARSE 45%, filter, in comparison to the standard dust filters, allows a more efficient filtration of particles with diameter superior to 10um (like hair, pollen, sand, generic dust).

Sound absorbing foam



The sound absorbing foam allows to reduce the noise coming from the outside when the product is turned off.

DIMENSIONS (mm)



MODEL	A	B	C	D	E	F	G	H
GHOST	250	233	40	500	∅100/160	48	212	212

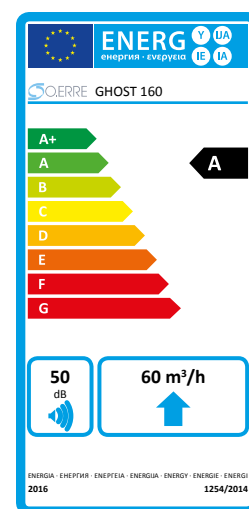
A	B	C
106	54	9



- Motor housing placed inside the wall behind the heat exchanger to make the product highly silent (only 160).
- High efficiency heat exchanger (up to 93%) made of ceramic material.
- Made of long life, high quality finest materials, with elegant design.
- Front cover in ABS.
- Tilting opening system of the front panel to prevent ingress of air when the fan is OFF.
- External grille made of ABS specifically designed to reduce the outside noise.
- Standard duct length 500mm. 700mm length available on request.
- 250mm minimum wall depth for 160 and 200mm for 100 - 3m maximum wall depth (2,5m in case of 90° curve).
- DC ball bearing motorimpeller, brushless with electronic commutation.

- Long life and low energy consumption.
- Easy cleaning and maintenance.
- Double dust filter, washable and easy to access for maintenance operations.
- IPX4 protection degree.
- Led indicator for functions and filter cleaning.
- Humidity and twilight sensors (active and wireless versions).
- The last set function is saved and automatically restored in case of interruption of the power supply.
- Caps for closing pipes during preparation included in the package.
- No condensation drainage required.
- Working Temperature Range: - 30°C + 50°C.
- Possibility of replacing the standard filter with ISO COARSE 45% (only 160)

FIXING: wall mounting



CE IPX4

TECHNICAL DATA

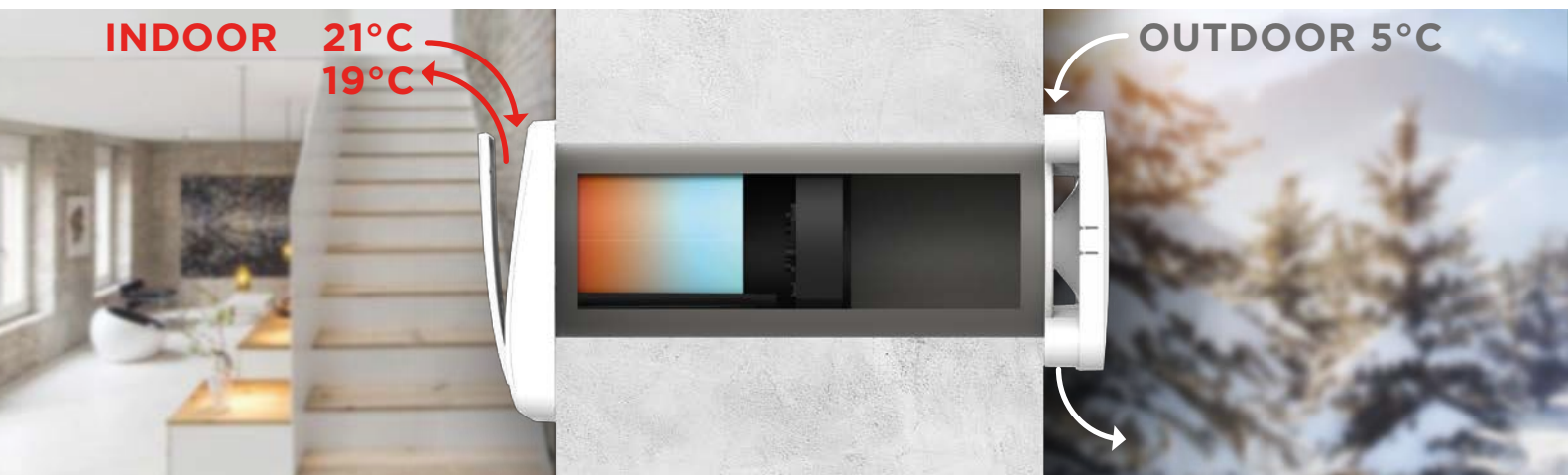
Model	Code	∅ Hole (mm)	Voltage (V)	Frequency (Hz)	Flow rate "IN" (m³/h)	Flow rate "OUT" (m³/h)	Pressure (mmH₂O)	Pressure (Pa)	Power (W)	Sound level dB(A) _{3m}	Weight (kg)
GHOST 100 BASE	0010500	100	220-240	50	30	30	7,3	72	6,9	37	3,5
GHOST 100 ACTIVE	0010510	100	220-240	50	30	30	7,3	72	6,9	37	3,5
GHOST 100 WIRELESS	0010520	100	220-240	50	30	30	7,3	72	6,9	37	3,5
GHOST 160 BASE	0010530	160	220-240	50	60	60	5,5	54	6,7	30	5
GHOST 160 ACTIVE	0010540	160	220-240	50	60	60	5,5	54	6,7	30	5
GHOST 160 WIRELESS	0010550	160	220-240	50	60	60	5,5	54	6,7	30	5

Model	Code
TC GHOST	0010560

PERFORMANCE

Model	Night speed			Speed 1			Speed 2			Speed 3		
	Flow rate (m³/h)	Power (W)	Sound level dB(A) _{3m}	Flow rate (m³/h)	Power (W)	Sound level dB(A) _{3m}	Flow rate (m³/h)	Power (W)	Sound level dB(A) _{3m}	Flow rate (m³/h)	Power (W)	Sound level dB(A) _{3m}
GHOST 100	5	4,0	13	10	4,7	18	20	5,6	28	30	6,9	37
GHOST 160	10	3,9	4	20	4,2	9	40	5,5	21	60	6,7	30

For the basic versions refer only to speeds 1 and 3



For 70 seconds Ghost extracts to the outside the hot and stale air present in the room. By crossing the duct the air releases its thermal energy which is accumulated by the ceramic exchanger; at the end of this cycle the fan reverses the direction of rotation and starts the input cycle for another 70 seconds. The outdoor fresh air, passing through the hot ceramic exchanger, recovers the thermal energy and is introduced into the room at a more comfortable temperature. This allows to achieve significant energy savings, as it prevents the heating system from operating at maximum intensity as would happen in the event of air exchange by opening the windows.

PRINCIPLE OF DECENTRALIZED RESIDENTIAL VENTILATION

The thermal energy is collected in a ceramic exchanger as long as it reaches the maximum capacity. Every 70 seconds the fan reverses the direction of the rotation alternating air extraction and air intake cycles.

